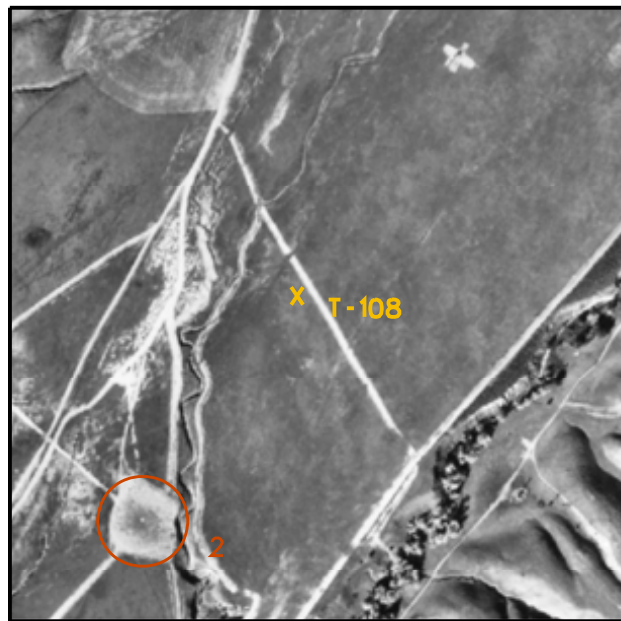


T-102

1. BOMBING TARGET T-102, TARGET HAS BEEN RAZED



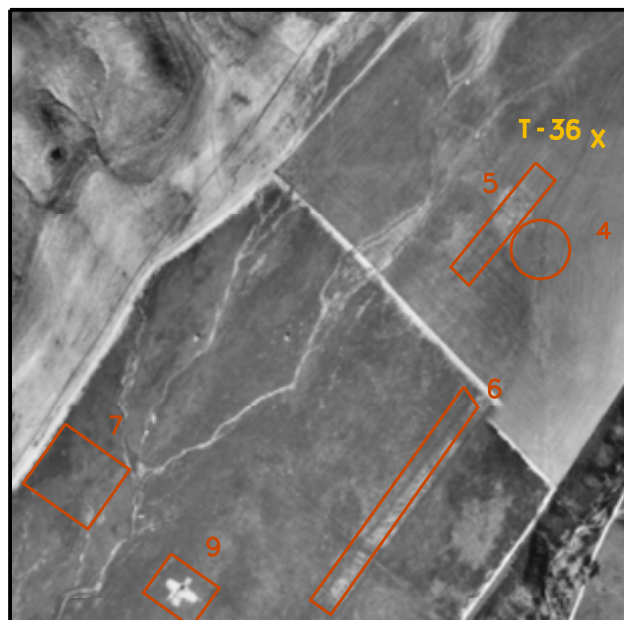
T-108

2. BOMBING TARGET T-108, TWO TARGET CIRCLES IDENTIFIED MEASURING 150' AND 300' IN DIAMETER. NO EVIDENCE OF CRATERING IDENTIFIED



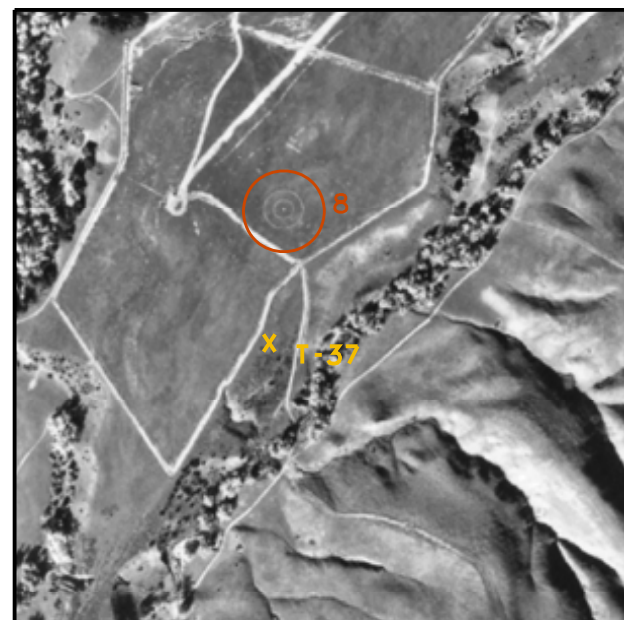
T-35

3. BOMBING TARGET T-35, TARGET HAS BEEN RAZED



T-36

4. BOMBING TARGET T-36, TARGET HAS BEEN RAZED
 5. MOCK AIRSTRIP AND AIRPLANE HAVE BEEN RAZED
 6. POSSIBLE LANDING STRIP 1300' X 120' STILL VISIBLE
 7. ONLY THREE OF THE FIVE CIRCLES ARE VISIBLE
 9. "X" SHAPED FEATURE WITH DARK CENTER. MEASURES APPROXIMATELY 150' X 150'

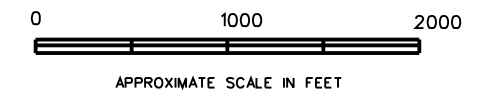


T-37

8. BOMBING TARGET T-37, STILL VISIBLE, NO EVIDENCE OF CRATERING

LEGEND

- PROPERTY LOCATION
- FEATURE DESCRIPTION BASED ON 1949 IMAGERY FOR FEATURES 1, 3, 4 AND 5
- X TARGET LOCATIONS BASED UPON 1950 HISTORIC MAP



NOTE: PHOTOS ON THIS PLATE ARE NOT GEO-REFERENCED.



U.S. ARMY CORPS OF ENGINEERS
 ST. LOUIS DISTRICT

TRABUCO BOMBING AND ROCKET RANGE
 MISSION VIEJO, CALIFORNIA
 ORANGE COUNTY
 1952 FEATUES OF INTEREST DETAILS

PROJ. DATE:	DATE OF PHOTO: FEB & DEC 1952, MAR 1953	PLATE NO. 8
#####DATE-TIME#####	#####DESIGN-FILES-SPECIFICATION#####	