

Former Trabuco Bombing Range
DERP—FUDS No. J09CA0209
Remedial Investigation (RI)/Feasibility Study (FS)





Meeting 2

Technical Planning Process
(TPP)

August 18, 2005


Larry Sievers
(213) 452-3990
larry.a.sievers@usace.army.mil




Los Angeles District




Agenda August 18, 2005



- Introductions
 - All
- Opening Remarks
 - USACE/All
- Trabuco Bombing Range RI/FS
 - Schedule/End Game/Problem Definition
- USACE
- Trabuco Bombing Range RI/FS Update
 - ITSI
- Planning for Project Execution – TPP process
 - Parsons
- Agency and Stakeholder Comments
 - DTSC/City/County/others




Los Angeles District




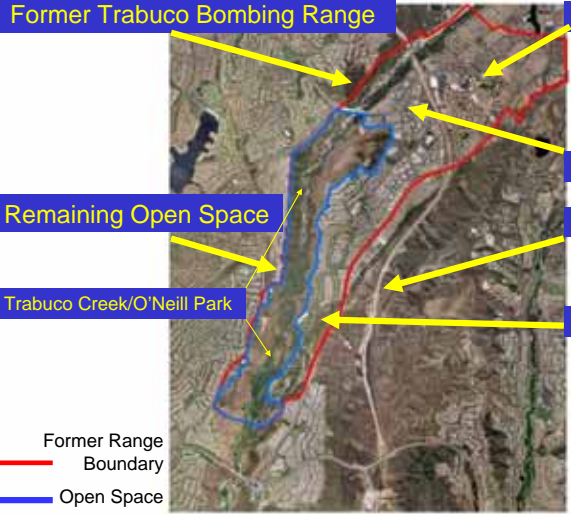
Trabuco Bombing Range TPP and RI/FS Schedule

- TPP Meeting 1 June 27, 2005 ☺
- TPP Meeting 2 August 18, 2005 ☺
- TPP Meeting 3 October 27, 2005 10AM @ City Hall
- Public Meeting October 27, 2005 – Poster session
- TPP Meeting 4 To Be Determined / Introduction to Work Plan
- Deliverables
 - RI/FS Work Plan, January-April 2006
- RI/FS Field Work Spring 2006



Los Angeles District





Former Trabuco Bombing Range

RSM City Hall

Remaining Open Space

RSM Pkywy

Trabuco Creek/O'Neill Park

241 Toll Road

Tijeras Creek GC

Former Range Boundary

Open Space

Trabuco Bombing Range RI/FS End Game Scenarios – Permanent Solution

The RI/FS will:

- ◆ In the end, construct A Conceptual Site Model (CSM), validated through investigation
- ◆ Compare the CSM against remedial objectives and alternatives

Remedial Alternatives:

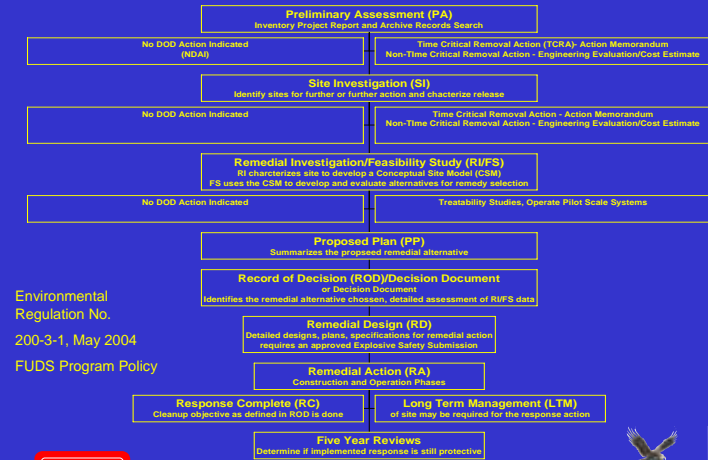
- Do Nothing Alternative
- Institutional Controls
- Construction Support
- Surface Removal
- Subsurface Removal
- Any combination



Los Angeles District



FUDS CERCLA (Superfund/NCP) Implementation Strategy



Environmental Regulation No. 200-3-1, May 2004
FUDS Program Policy



Los Angeles District



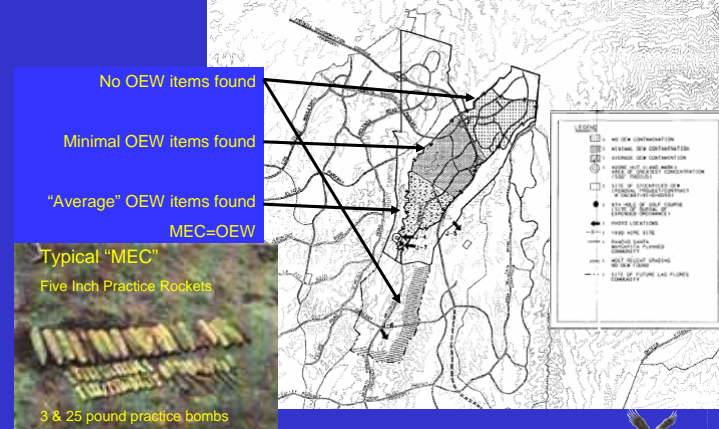
Trabuco Bombing Range Problem Definition



Los Angeles District



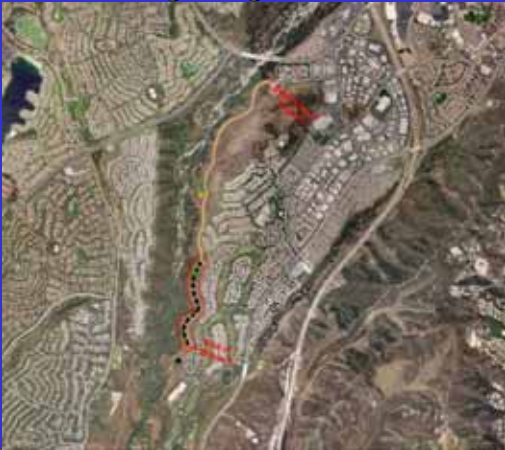
Trabuco Bombing Range Problem Definition



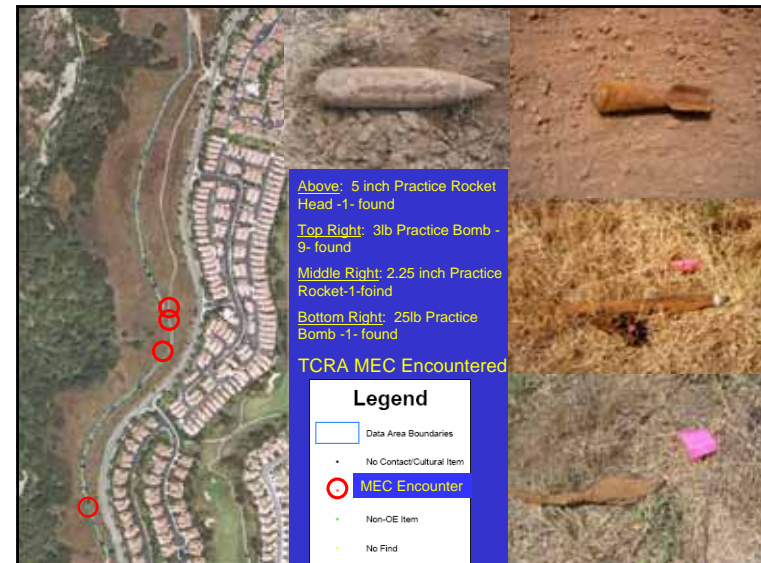
Los Angeles District



Trabuco Bombing Range Problem Definition



Los Angeles District



Trabuco Bombing Range RI/FS

Questions on:

USACE

- Involvement in Formerly Used Defense Sites

RI/FS Methodology

- Previous / Future Investigations

Problem Definition / Site History

- Types of items or where found, site operational history



Los Angeles District

