

**Former Trabuco Bombing Range**  
**DERP—FUDS No. J09CA0209**  
**Remedial Investigation (RI)/Feasibility Study (FS)**





**Meeting 3**

**Technical Planning Process**  
(TPP)

**October 27, 2005**


www.trabuco-bombrange.com  
 Larry Sievers  
 (213) 452-3990  
 larry.a.sievers@usace.army.mil




**Los Angeles District**




Agenda  
**October 27, 2005**



- Introductions
- Opening Remarks
  - USACE/All
  - TPP 2 Minutes
- Trabuco Bombing Range RI/FS
  - Schedule
  - Formerly Used Defense Site primer
  - Site Background
- Trabuco Bombing Range RI/FS TPP Meeting 3
  - Project Status Update
  - Planning with Stakeholders for Project Execution
    - How/where will we do the investigation
    - TPP Memorandum will summarize efforts
- Agency and Stakeholder Comments
  - DTSC Roles and Responsibility
  - City/County/others



**Los Angeles District**



**Finish**

Before:

- Delays real and imagined set in
- USACE, Contractor and Stakeholders lose focus
- Formerly Used Defense Site spending priorities shift

Keep:

- A frenetic pace
- The end game in mind




**Trabuco Bombing Range RI/FS**  
**End Game Scenarios – Permanent Solution**

**The RI/FS will:**


- ♦ In the end, construct A Conceptual Site Model (CSM), validated through investigation
- ♦ Compare the CSM against remedial objectives and alternatives

**Remedial Alternatives:**

- Do Nothing Alternative
- Institutional Controls
- Construction Support
- Surface Removal
- Subsurface Removal
- Any combination



**Los Angeles District**

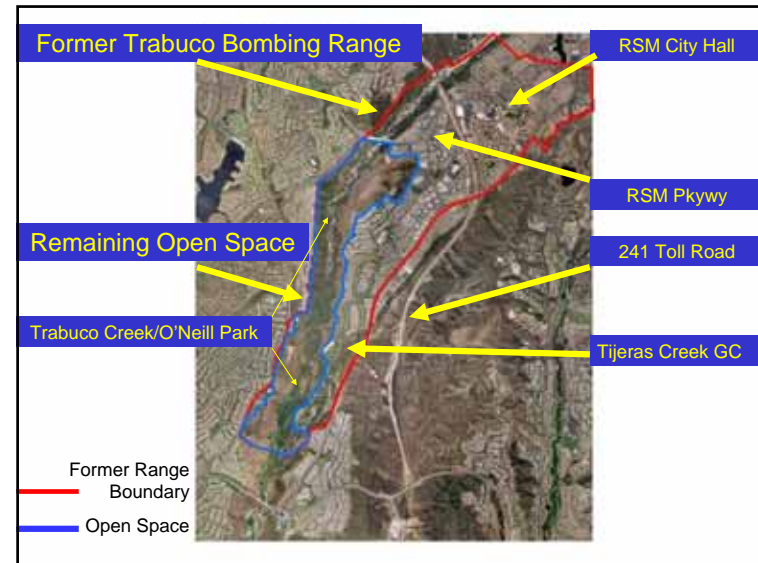


## Trabuco Bombing Range TPP and RI/FS Schedule

- TPP Meeting 1 June 27, 2005 ☺
- TPP Meeting 2 August 18, 2005 ☺
- TPP Meeting 3 October 27, 2005 ☺
- Public Availability Session October 27, 2005 – Poster session
- TPP Meeting 4 To Be Determined / Introduction to Work Plan
- Deliverables (make the project go round):
  - Geophysical Work Plan was submitted October 3, 2006 comments due November 3, 2006 – 30 day review of 25 pages of text
  - Public Involvement Plan was submitted October 18, comments due Jan 3, 06
  - RI/FS Work Plan, Jan/Feb - May 2006 – provides for 60 day review
- RI/FS Geophysical Survey Anticipated January 2006
  - Explosive Safety Submittal, Department of Defense deliverable
- RI/FS Field Work Summer 2006

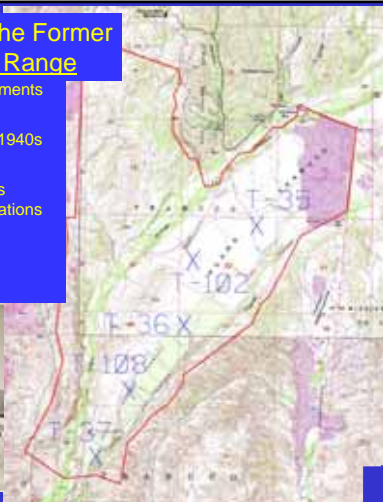


Los Angeles District



## Archive Evidence of the Former Trabuco Bombing Range

- Real Estate Acquisition documents from the 1940s
- Target Coordinates found in 1940s documents
- Aerial Photos from 1940s-50s reviewed to confirm target locations
- Interviews
- Development actions and documentation



Los Angeles District



## Problem Definition / Historic Use

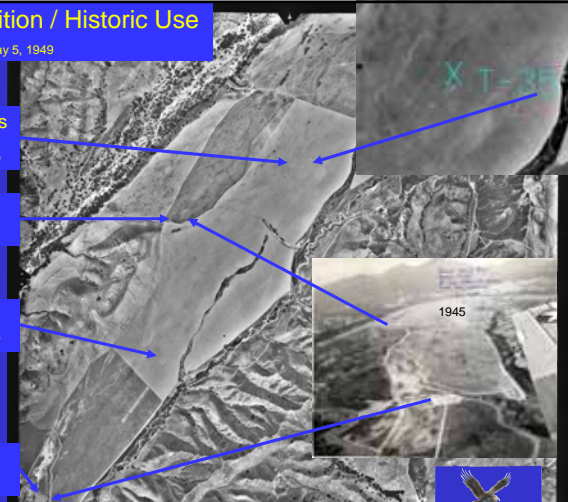
May 5, 1949

T-35-ship silhouettes on the ground, 1945

T-102 in 1945, not 1949 rocket target

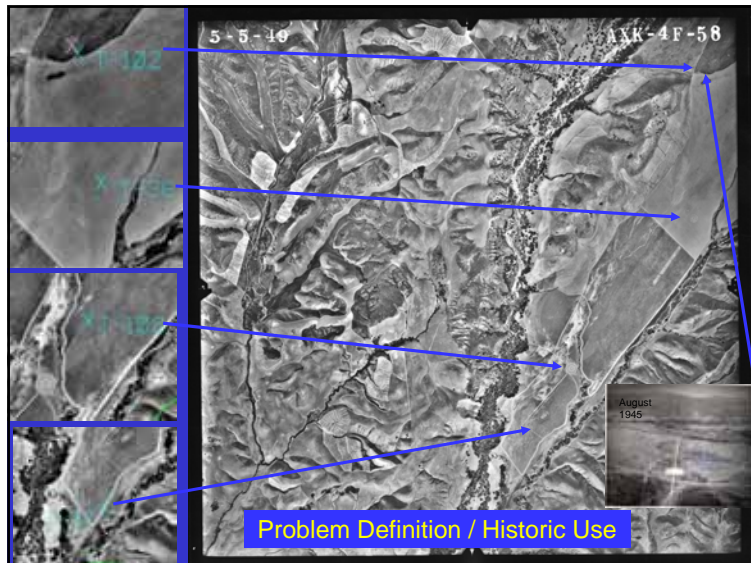
T-36 in 1949, not in 1945, mock aircraft/runway

T-108 in 1949 and 1952



Los Angeles District





### Trabuco (Practice) Bombing Range

- Practice Bombs types were 3 & 25 pound bombs called "target markers" and 2.25 & 5 inch inert practice rockets
  - Practice bombs contained an expelling charge of smokeless powder and a marker load of stabilized red phosphorous or zinc oxide

Los Angeles District

### Trabuco Bombing Range History - Development

- 1984 Santa Margarita Company requests El Toro MCAS assistance in clearing the site prior to development
  - El Toro MCAS/OCHDS conduct surface sweep of southern end of site — area and removes 14 truck loads (50,000 lbs) of 'empty' practice munitions, 478 items suspected of containing spotting charges—those were destroyed
  - El Toro MCAS continues clearance support until 1988
- 1988 Santa Margarita Company has stockpiled 122,000 lbs of ordnance on site MCAS unable to respond
  - In S. end of site 2'-3' soil was turned over, run through 4" screen and MEC removed and the area walked with metal detectors
  - Several tons of ordnance buried 20-30 feet below ground surface under 8<sup>th</sup> hole of golf course

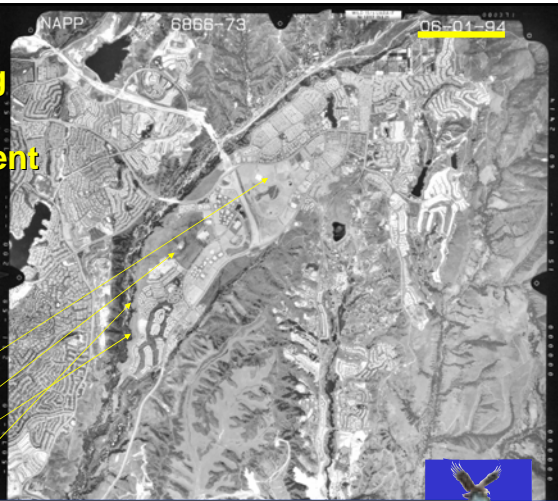
Los Angeles District

### Trabuco Bombing Range Development

Los Angeles District

# Trabuco Bombing Range Development

- 1994-2005
- Build-out near/complete
- Encounters with items occur infrequently
- July 2004
- March 2004
- January 2004
- Bikeway 2003



Los Angeles District



# Formerly Used Defense Site (FUDS) Primer

Why	Congress 1986 'correction, detection and disposal of unexploded ordnance which creates an imminent and substantial endangerment....'
Where	'the Secretary shall carry out all response actions under CERCLA at properties owned by, leased or otherwise possessed by the United States' – USACE assigned
Who	USACE has almost 10,000 FUDS identified nationwide, over 1,300 in the Los Angeles District, funding limited
How	Military Munitions Response Program (MMRP) and Hazardous Toxic Radioactive Waste (HTRW) use the DoD investigation/cleanup methods based on Env. Protection Agency (EPA) CERCLA process



Los Angeles District



# Trabuco Bombing Range

## Site History Milestones:

- △ 1990-1993 – PA
- FUDS Determination
- △ 1991
- Remove 121,000lbs of MEC
- △ 2004 – TCRA
- County Constr. Crew finds 11 MEC/3 UXO
- △ 2005 – RI/FS
- Planning underway
- Through PP/DD



Los Angeles District

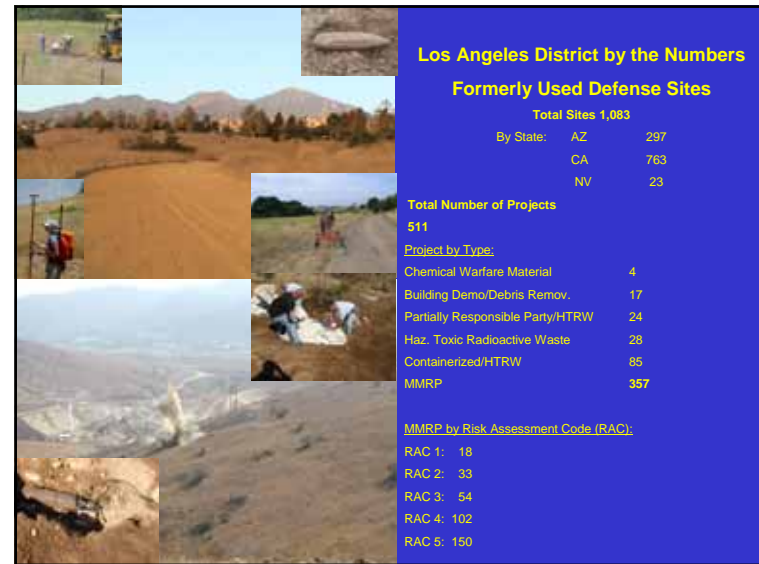
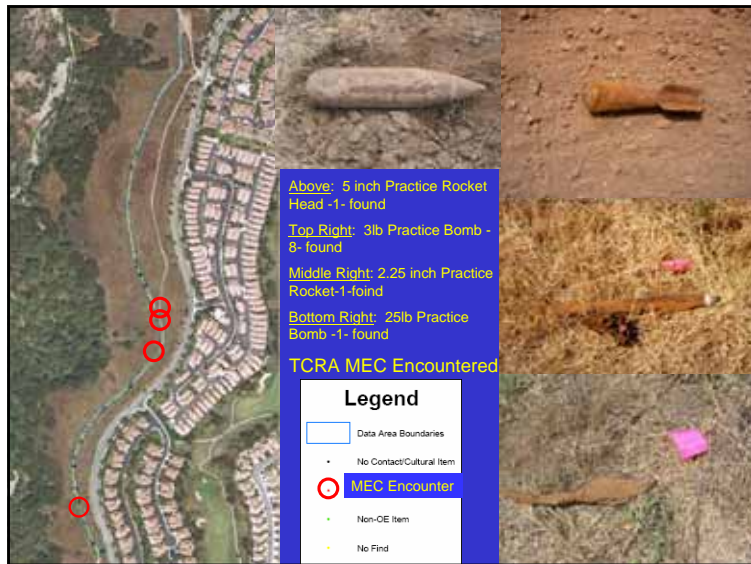


# Trabuco Bombing Range Bikeway



Los Angeles District





## Risk Assessment Code (RAC)

**RAC 1 - 4**

Action is required to mitigate the Munitions and Explosives of Concern (MEC) hazard or protect personnel (i.e. fencing, physical barrier, guards, etc). Rankings 1-4 with 1 as highest priority, indicate the relative priority for cleanup among thousands of sites. It evaluates and scores the severity of a munitions (from catastrophic to negligible) and the probability (from frequent to improbable) of an MEC encounter.

SEVERITY	FREQUENCY	PROBABILITY	SEVERITY	SEVERITY	SEVERITY
1	2	3	4	5	6
1	1	1	1	1	1
2	2	2	2	2	2
3	3	3	3	3	3
4	4	4	4	4	4
5	5	5	5	5	5
6	6	6	6	6	6

**RAC 5**

Usually indicates no DOD action required.

U.S. Army Corps of Engineers, Los Angeles District

Geophysical Prove Out Area January 2006

**Los Angeles District Corps of Engineers**  
Mission: Serve the Public and meet Govt. customer  
Services: Regulatory/Construction/Flood Control /Navigation/Recreation/Environmental

226,000 square miles  
420 miles of shoreline  
10% of the US population, growing

Questions or Comments on:

- Implementation of FUDS
- RI/FS planning
- Public Involvement

**Los Angeles District**